

15 IMPACT REPORT

2015/ A Year of Change

1/ A Year of Change

It was a year of significant change at Mental Health America of Franklin County (MHAFC) with Kenton Beachy taking the helm as Executive Director. New leadership brings new perspective, new ideas, new relationships and a lot to learn for all involved. Our staff resolved to let our mission guide us through all of the changes—and we quickly learned that when the mission comes first everything else seems to fall into place.



Mental Health issues affect one in four individuals.

It is the goal of MHAFC to challenge how people think about mental illness, make it easier to get help, and give people the support they need to get better and stay better.

The support of our members, volunteers, foundation and corporate partners, government entities, and elected officials are vital to our success. Our success means people affected by mental illness know that we are here to help and that they'll never be alone on their road to recovery.

2015/

Agency Highlights

The Pro Bono Counseling Program officially opened its doors in Fairfield and Delaware Counties.

The format of our Laughing Away the Blues event changed to focus more on our mission while lowering expenses by 28% and increasing income by 17%.

The POEM (Perinatal Outreach and Encouragement for Moms) program expanded by hiring a part-time staff person and increasing outreach to area healthcare providers.

A twice-monthly Mindful Living support group was created.

The first stage of our Workplace Wellness initiative was developed through a one-year, \$21,600 grant from the Department of Mental Health and Addiction Services.

2/ Program Highlights

Our programs and events elevated mental health in Central Ohio through:

91%

Ombudsman Services

1,563 people were served by the Ombudsman in 2015

91% felt their problem was effectively resolved

85%

Support Groups

33 monthly support groups provided 6,777 Support group contact hours

85% report that attending the support group has improved their coping skills.

95%

POEM Program

344 Support group contact hours

255 Information and referral calls

38 Participants in the mentor program

95% of POEM participants reported successful symptom reduction and increase in information support

95%

Pro Bono Counseling Program

147 people linked to free counseling through the Pro Bono Counseling Program who received

1,227 hours of counseling

95% who responded to a survey said they had made improvement toward their identified goals

98%

Get Connected

154 Get Connected participants

98% of those surveyed said they would recommend this program to someone they know because it was helpful for them

3/ In the Community

Our presence was felt throughout Central Ohio:

802

Event & Conference Participants

(Professional and Community)

916

Mental Health Screenings

(Online and in-person)

780

Phone Calls

(Advocacy, Non-Ombudsman Information and Referrals, Programs)

3503

Volunteer Hours

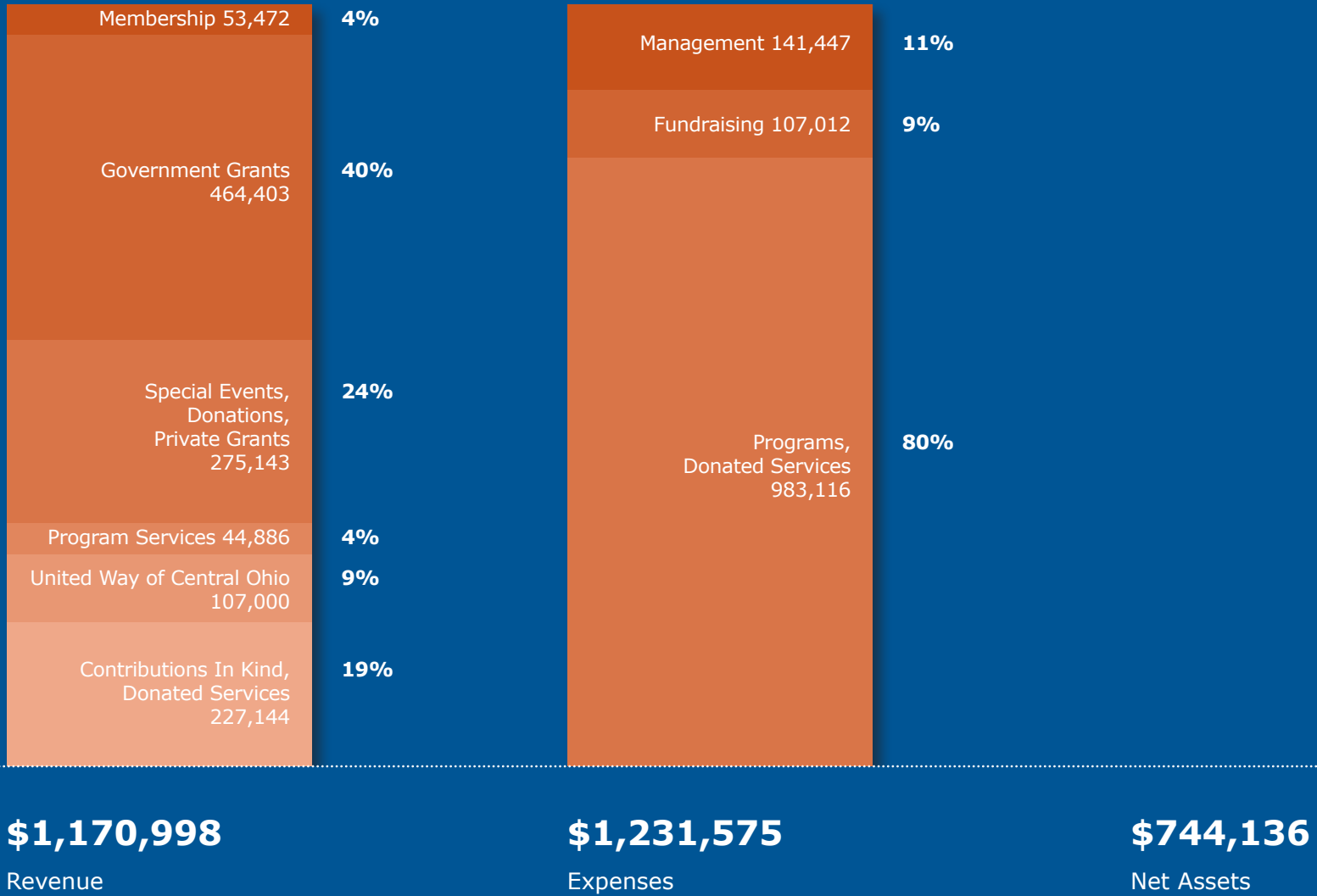
Sponsors of the Ohio Mental Health Caucus to educate legislators on mental health issues

Member of the statewide Coalition for Healthy Communities

Member of the Step Therapy Coalition

Steering committee member of the Provider Leadership Association of Franklin County ADAMH providers

4/ Financial Overview



15 IMPACT REPORT

2015/ A Year of Change

Mental Health America of Franklin County Board of Trustees

Nicholas Breitborde, PhD
The Ohio State University

Robin Canowitz, Esq.
Vorys, Sater, Seymour & Pease

Kristin Chek-McChesney, JD
IGS Energy

Jeannette Dagam, DO
Twin Valley Behavioral
Healthcare

Bob Dolciato
Bank of America Merrill Lynch

Matthew Endress, MBA
Cardinal Health

Leigh Householder
GSW Worldwide

Susan Jagers, JD
Initiative Consulting

Daron Larson, MA
Attentional Fitness Training, LLC

Karen L. McDonnell, MBA, SPHR
Accenture Federal Services

Sharon S. Parker, MS, RN, CNS
Secretary/Treasurer
Capital University

Stephanie Pavol
Cardinal Health

Corey D. Perry, MDiv, JD
President
OhioHealth

Kelly Reo
Navigator Management
Partners, LLC

David K. Schoettmer
Navigator Management
Partners

David J. Speas, CPA
Columbia Pipeline Group

Mike Watson, MA
Nationwide Insurance

614-221-1441

info@mhafc.org

mhafcinc

@mhafc

